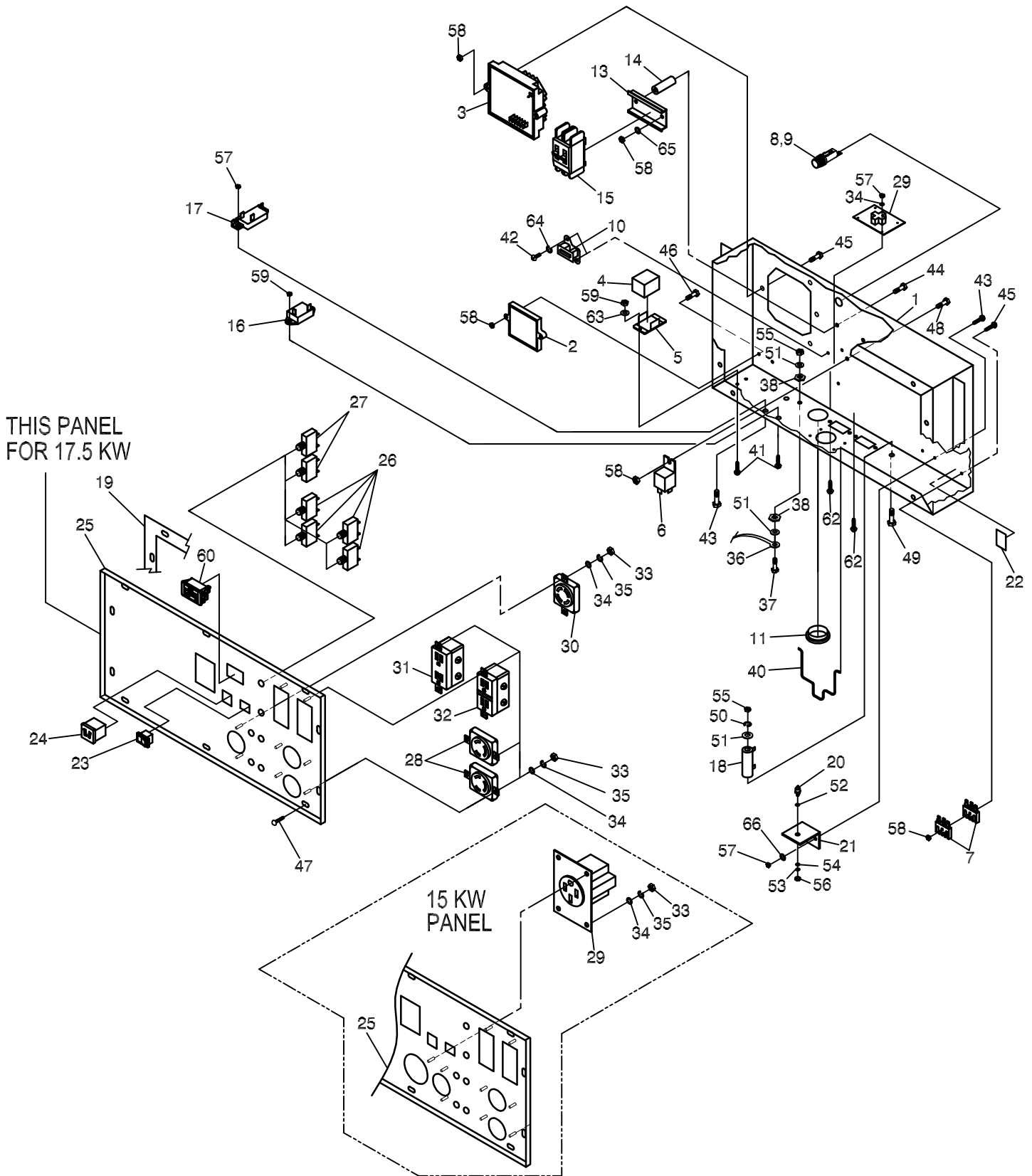


# GROUP



## EXPLODED VIEW: CONTROL PANEL

DRAWING #: 0H0732

APPLICABLE TO: 005734-0

## GROUP

ITEM	PART #	QTY.	DESCRIPTION	ITEM	PART #	QTY.	DESCRIPTION
1	0G2888	1	CONTROL PANEL BOX (15 KW)	53	023897	1	WASHER FLAT #10
	0G2890	1	CONTROL PANEL BOX (17.5 KW)	54	030468	1	WASHER STEP NYLON .20
2	0D4409	1	ELECTRONIC GOVERNOR / IDLE C CONTROLLER	55	049813	3	NUT HEX M6-1.0
3	0F9719	1	ASSY PCB VREG AIR COOLED	56	022158	1	NUT HEX #10-32
4	0F3100	1	RELAY 3PDT 12VDC	57	0E6480	8	NUT HEX M4-0.7 NYINS (17.5 KW)
5	0F3101	1	RELAY BASE 3PDT 12VDC		0E6480	4	NUT HEX M4-0.7 NYINS (15 KW)
6	052844	1	RELAY PNL 12VDC SPST 30A	58	082025	8	NUT HEX M5-0.8 NYINS
7	065795	2	RECTIFIER-BATTERY CHARGER	59	0D9784	4	NUT HEX M3-0.5 NYINS
8	032300	1	HOLDER FUSE	60	0H8214	1	HOUR METER w/ALERTS AC/DC
9	028578	1	FUSE 10A XAGC10	61	0H0758	1	WIRE ASM, HOUR METER (NOT SHOWN)
10	0D4804A	1	TRANSFORMER, IDLE CURRENT	62	0F5458	4	SCREW HHSP #10 X 3/8 HI-LOW
11	023484S	1	BUSHING SNAP	63	031879	4	WASHER FLAT #4
12	0G2887	1	HARNESS, CONTROL PANEL BACK (NOT SHOWN)	64	043182	2	WASHER LOCK M3
13	0D5045	1	DIN RAIL 59.5mm LONG	65	051713	2	WASHER FLAT M5
14	0G0923	2	SPACER .25 X .50 X 2.5 (17.5 KW)	66	043180	8	WASHER FLAT M4 (15 KW)
	0D5734	2	SPACER .25 X .50 X 1.5 (15 KW)		043180	6	WASHER FLAT M4 (17.5 KW)
15	0D1004E	1	CIRCUIT BREAKER 50A 400V 2POLE	67	0H1330	1	ENGINE HARNESS (NOT SHOWN)
16	087962	1	CIRCUIT BREAKER 10A 1POLE				
17	048505	1	CIRCUIT BREAKER 6A 1POLE				
18	057405	1	RESISTOR 25R 5% 25W				
19	0D6140	2	GASKET, PORTABLE CONTROL PANEL				
20	049939	1	RECTIFIER 1N1206R				
21	055444	1	HEATSINK				
22	027565	A/R	TAPE ELEC UL PERMACEL				
23	087968	1	SWITCH, ROCKER -J0				
24	090418	1	OUTLET, 12VDC SNAP				
25	0H0761	1	PANEL, SHEET METAL (15 KW)				
	0H0763	1	PANEL, SHEET METAL (17.5 KW)				
26	075207A	4	CIRCUIT BREAKER 30A				
27	075207	2	CIRCUIT BREAKER 20A				
28	068868	2	OUTLET 30A 120V RECEIPT				
29	0D4969	1	OUTLET 50A 125/250V				
30	043437	1	OUTLET 30A 125/250V				
31	0D4968	1	OUTLET 20A 120V DPLX				
32	0D4966	1	OUTLET 20A 120V GFCI				
33	051715	14	NUT HEX M4-0.7 (15 KW)				
		10	NUT HEX M4-0.7 (17.5 KW)				
34	038150	14	WASHER FLAT #8				
35	022264	14	WASHER LOCK M4 (15 KW)				
		10	WASHER LOCK M4 (17.5 KW)				
36	0742600142	1	GROUND WIRE				
37	049721	1	SCREW HHC M6-1.0 X 35				
38	0A1658	2	WASHER LOCK SPECIAL 1/4"				
39	0D3546	1	HARNESS, CONTROL PANEL FRONT (NOT SHOWN)				
40	0G0615	1	SPRING RETAINER (17.5 KW)				
41	090987	4	SCREW PPHM M3-0.5 X 12				
42	0C1085	2	SCREW PPHM M3-0.5 X 8				
43	075475	4	SCREW PPHM M4-0.7 X 10 (15 KW)				
	075475	8	SCREW PPHM M4-0.7 X 10 (17.5 KW)				
44	077682	2	SCREW PPHM M5-0.8 X 80 (17.5 KW)				
	080823	2	SCREW PPHM M5-0.8 X 50 (15 KW)				
45	075235	3	SCREW PPHM M5-0.8 X 30				
46	0G3024	2	SCREW HHC M5-0.8 X 25				
47	074908	10	SCREW HHTT M5-0.8 X 10				
48	045770	1	SCREW HHC M5-0.8 X 10				
49	0A2053	1	SCREW HHC M6-1.0 X 65				
50	022097	1	WASHER LOCK M6 (1/4")				
51	022473	3	WASHER FLAT 1/4"				
52	070370	1	WASHER MICA .203				